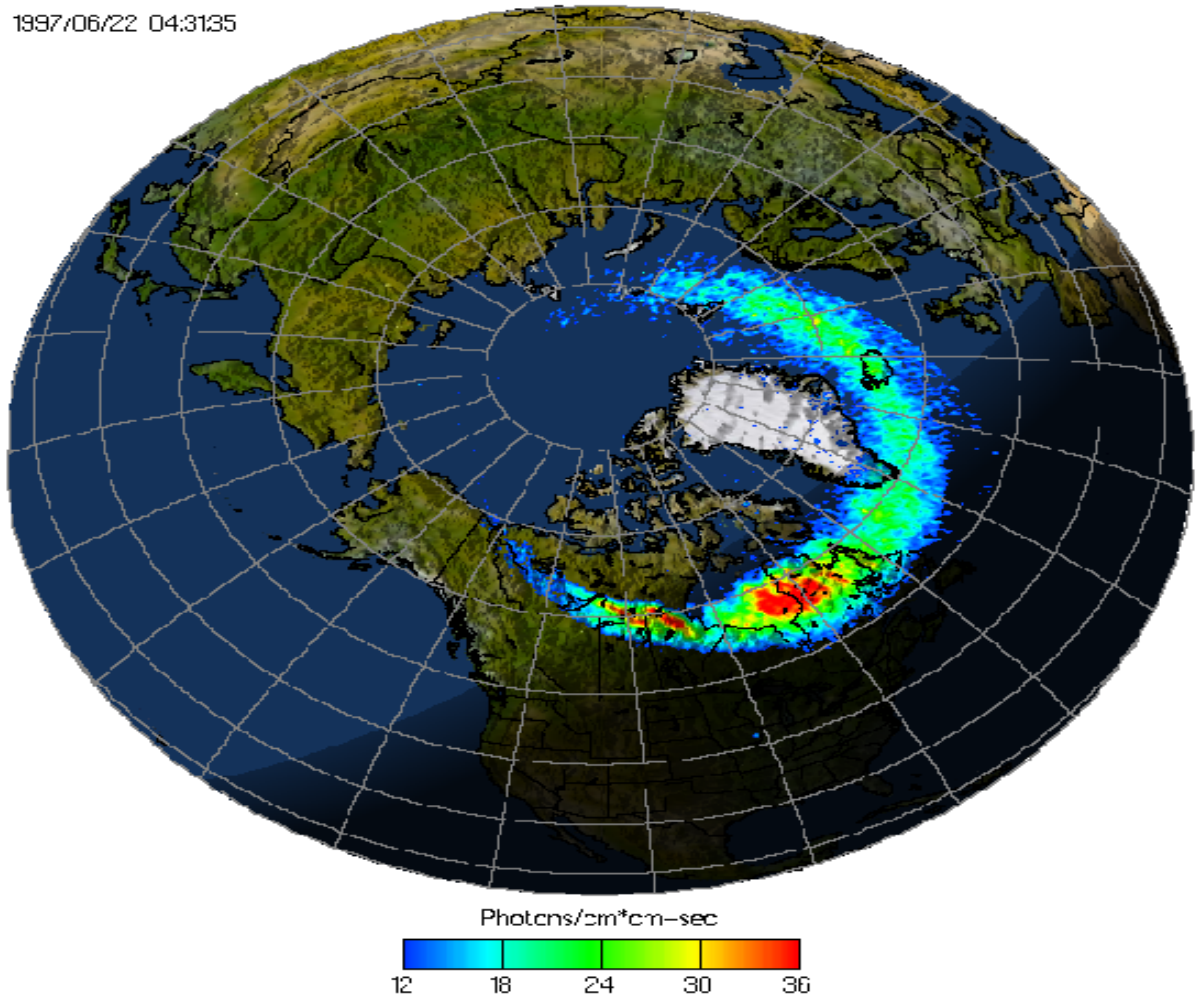
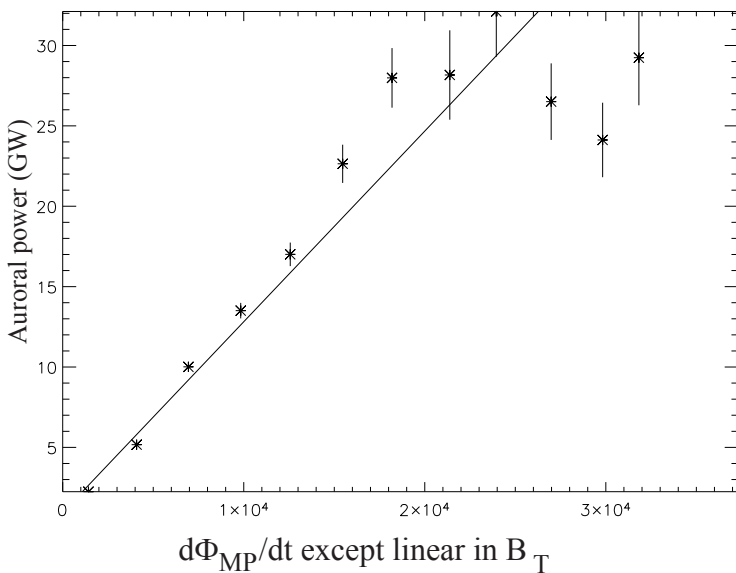


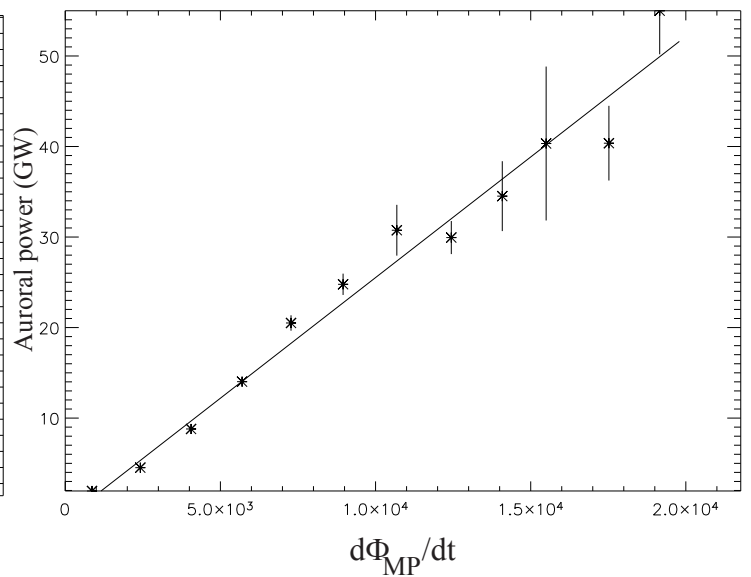
1997/06/22 04:31:35



Auroral power versus solar wind electric field



Auroral Power vs merging rate ("heartbeat")



Top: Global aurora, as monitored by the ultraviolet imager on the NASA satellite Polar. Bottom left, conventional formulas, based on the solar wind electric field, fail to predict auroral power, especially at higher activity levels. Bottom right, a new formula based on magnetic field merging as a driver, does better.